

8451 Boulder Court Walled Lake, MI

OFFICE SPACE FOR LEASE

- Garage parking available
- Common area kitchen and conference room
- Secluded outdoor patio
- Storage available
- Ample parking
- Nice wooded area
- First Floor - 8,994 SF



CONTACT US

248-710-8000

691 N. Squirrel Rd, Suite 290

Auburn Hills, MI 48326

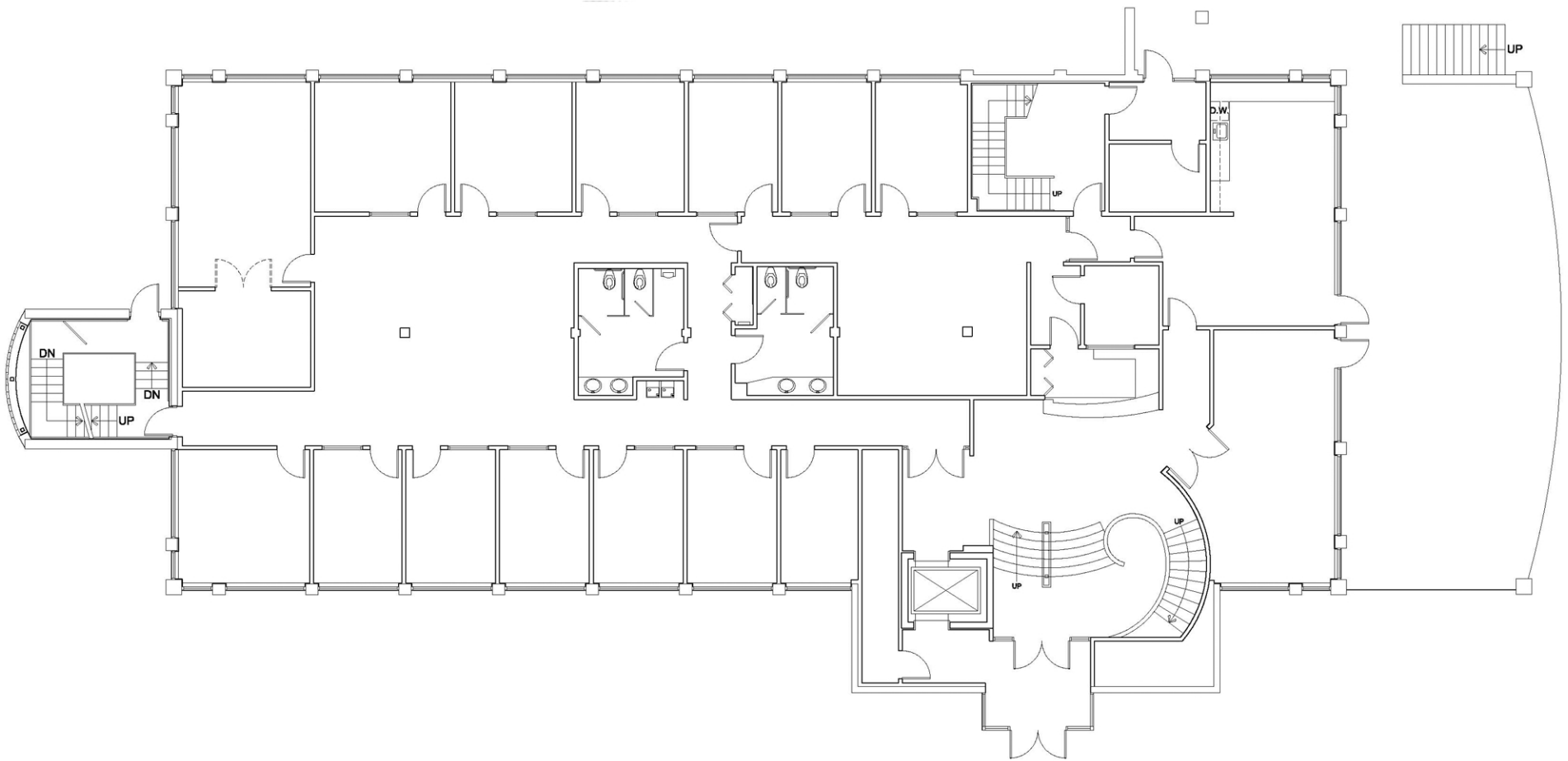
www.team-core.com



Kevin N. Tamer
Vice President /
Associate Broker
734 - 624 - 3729
knt@team-core.com



Samuel A. McLean
Vice President
248 - 935 - 7237
sam@team-core.com



DO NOT SCALE



8451 Boulder Court
Walled Lake, MI 48390

First Level
8,994 SF
For More Information Please Call:
248.710.8000

