

26913 Northwestern Hwy. Southfield, MI 48033

OFFICE SPACE FOR LEASE

- Large open floor plates, with room for expansion
- Immediate occupancy
- Up to 80,000 SF of contiguous space available
- Building signage available for large user
- Full Service Building with newly updated common areas, on-site management & 24 hour security
- Adjacent to Marriott and Courtyard by Marriott hotels
- Easy access to I-696 and the Lodge Freeways
- On - site Starbucks and Metro Deli
- First floor shared amenities - small and large conference room
- First come first served parking garage
- First come first served EV parking spots
- Plug and play options available with brand new furniture



CONTACT US
248-710-8000
691 N. Squirrel Rd, Suite 290
Auburn Hills, MI 48326
www.team-core.com



Kevin N. Tamer
Vice President /
Associate Broker
734 - 624 - 3729
knt@team-core.com



Samuel A. McLean
Vice President
248 - 935 - 7237
sam@team-core.com



Kevin N. Tamer
Vice President /
Associate Broker
734 -624 - 3729
knt@team-core.com



Samuel A. McLean
Vice President
248 -935 - 7237
sam@team-core.com



DO NOT SCALE



26913 Northwestern Hwy
Southfield, MI 48033

1A
15,358 RSF
For More Information Please Call:
248.710.8000



NORTH



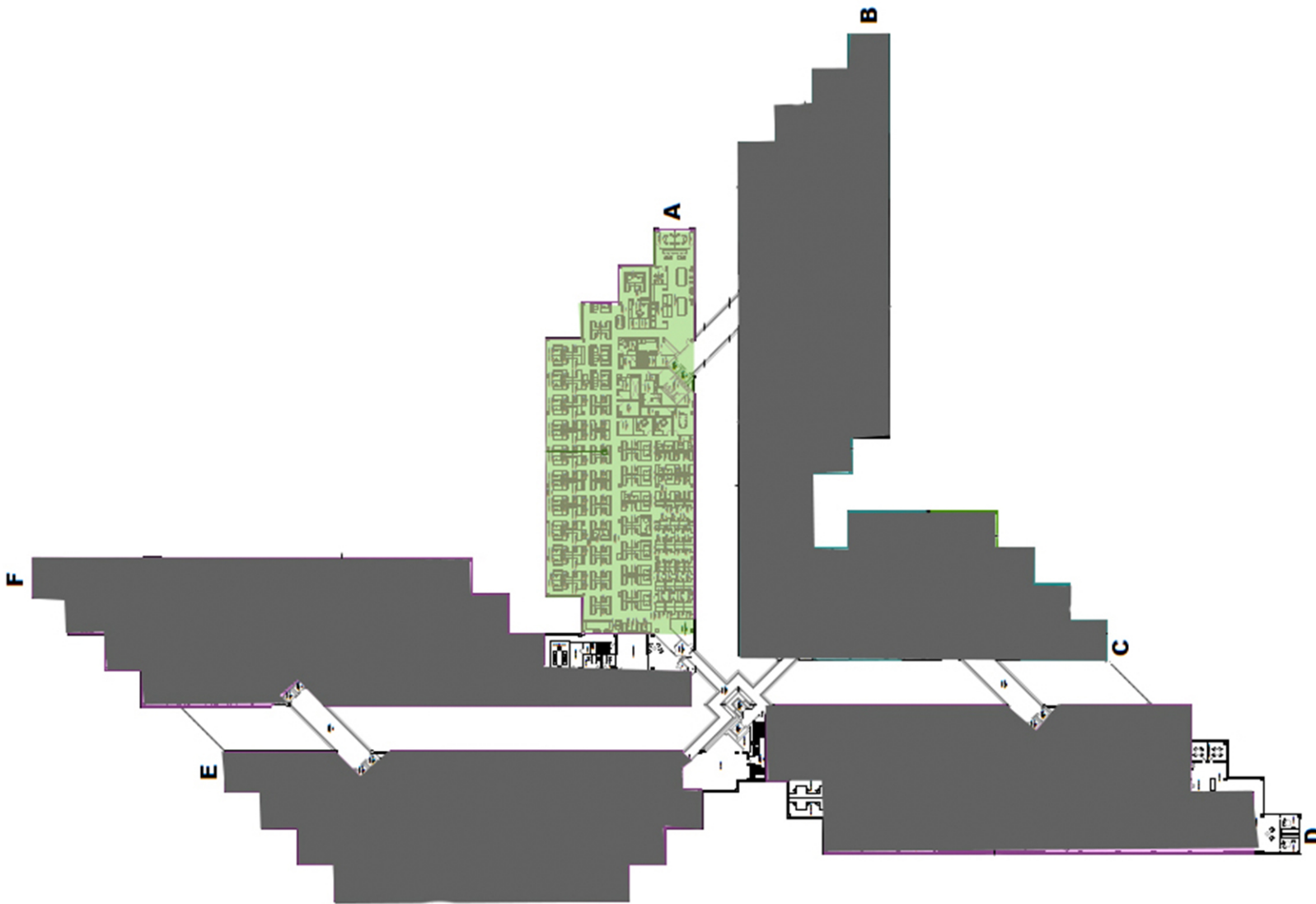
DO NOT SCALE



26913 Northwestern Hwy
Southfield, MI 48033

1A
15,358 RSF
For More Information Please Call:
248.710.8000





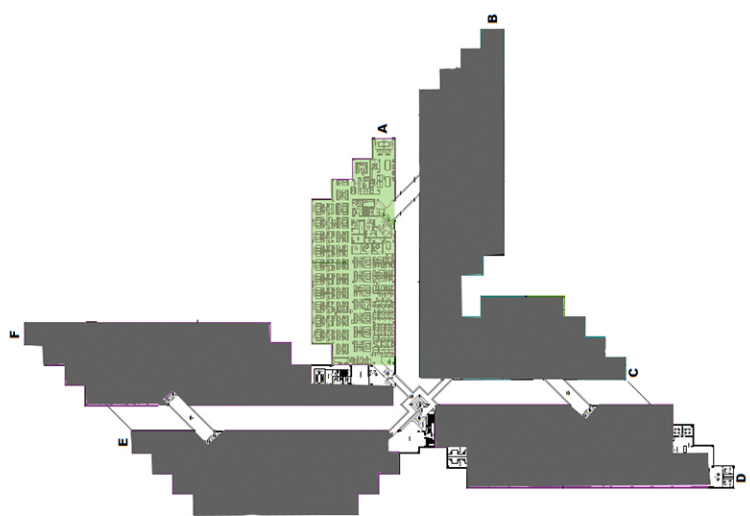
DO NOT SCALE



26913 Northwestern Hwy
Southfield, MI 48033

2A
22,479 USF
For More Information Please Call:
248.710.8000





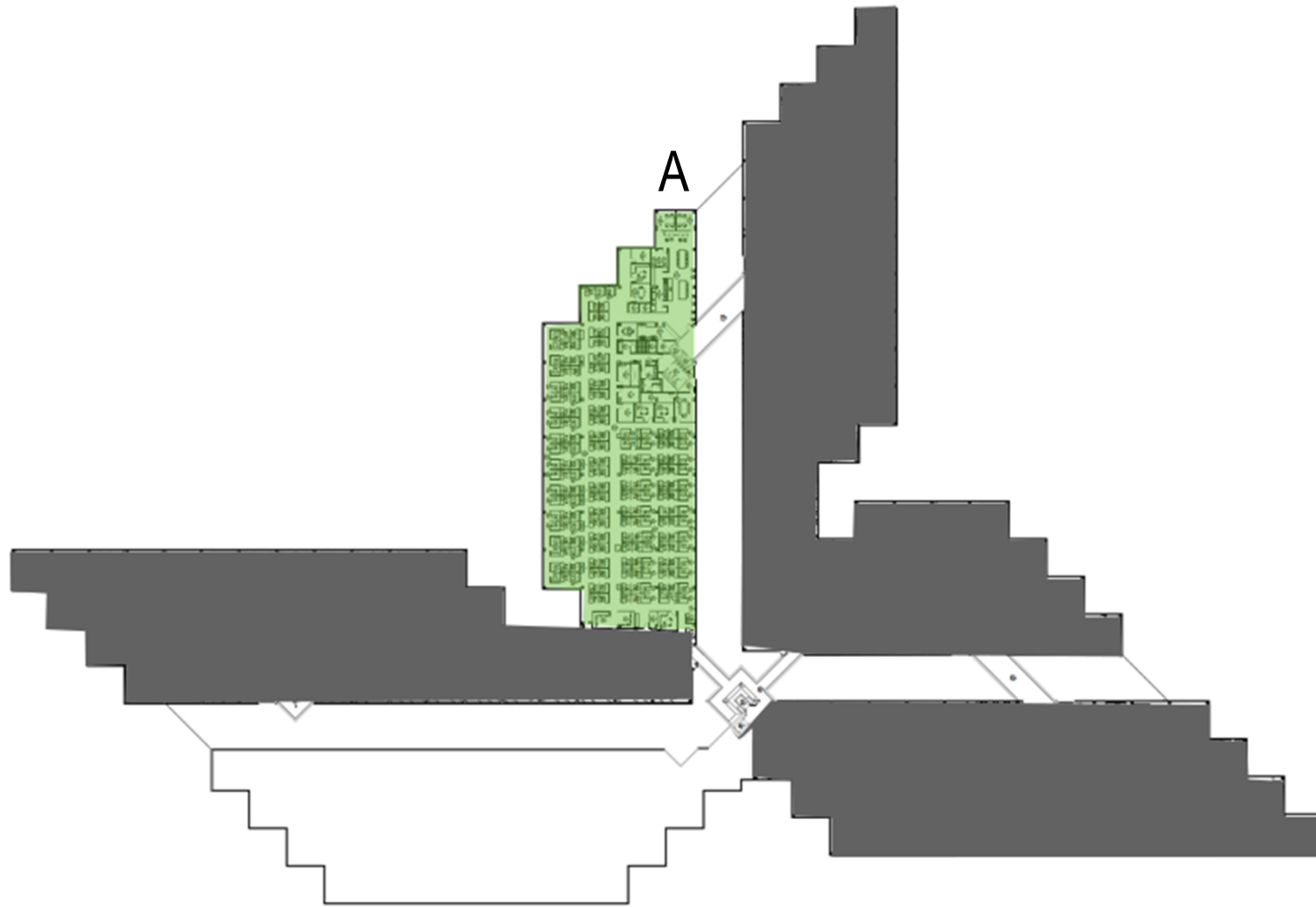
DO NOT SCALE



26913 Northwestern Hwy
Southfield, MI 48033

2A
22,479 USF
For More Information Please Call:
248.710.8000





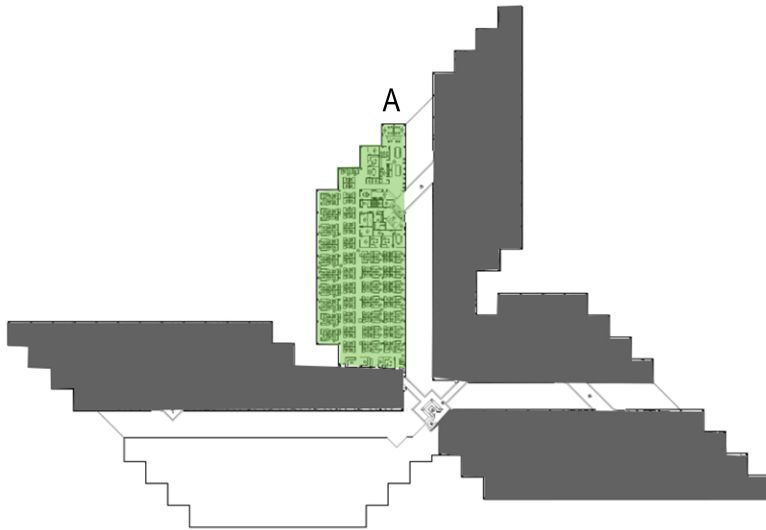
DO NOT SCALE



26913 Northwestern Hwy
Southfield, MI 48033

3A
22,479 USF
For More Information Please Call:
248.710.8000





DO NOT SCALE



26913 Northwestern Hwy
Southfield, MI 48033

3A
22,479 USF
For More Information Please Call:
248.710.8000

